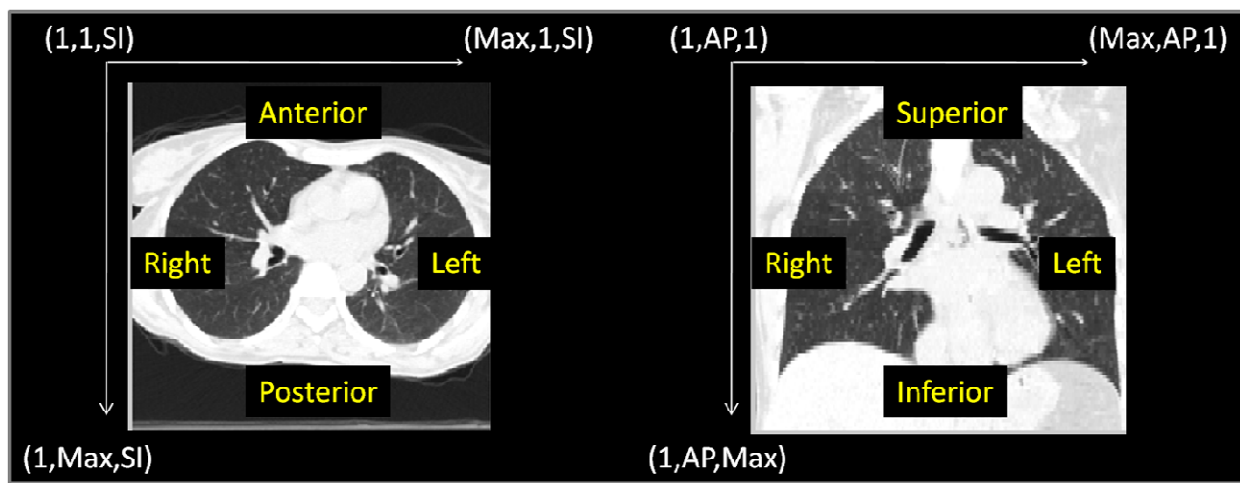


Available cases are downloaded as zip files, each containing the following:

- CaseID_300_T00_xyz.txt
- CaseID_300_T50_xyz.txt
- CaseID_T00.img
- CaseID_T50.img

The 300_T00_xyz and 300_T50_xyz text files contain a list of right/left (RL) - anterior/posterior (AP) - superior/inferior (SI) coordinate locations corresponding to 300 manually identified feature locations in the respective T00 and T50 component phase images from a 4DCT set. The T00 label represents the maximum inhale phase of the 4DCT, while the T50 label corresponds to the maximum exhale phase. The 300 landmark locations are a uniform sampling of the total quantity of manually identified landmark positions for the given case (see dir-lab.com, Table 1). The corresponding complete lists of T00 and T50 coordinates are not available for download, though investigators are encouraged to upload DIR output for further evaluation using the full landmark point sets.

The lists are presented in (RL, AP, SI) format, with reference to the following coordinate system:



The origin located at (1, 1, 1) represents the centroid of the right-anterior-superior corner voxel of the image volume. The rows of the "300" text files correspond, such that the first row of 300_T00_xyz.txt and 300_T50_xyz.txt represent the location of the same landmark feature in the respective T00 and T50 volumes. The coordinate locations are given in units of voxel indices, thus patient setup information is not required.