

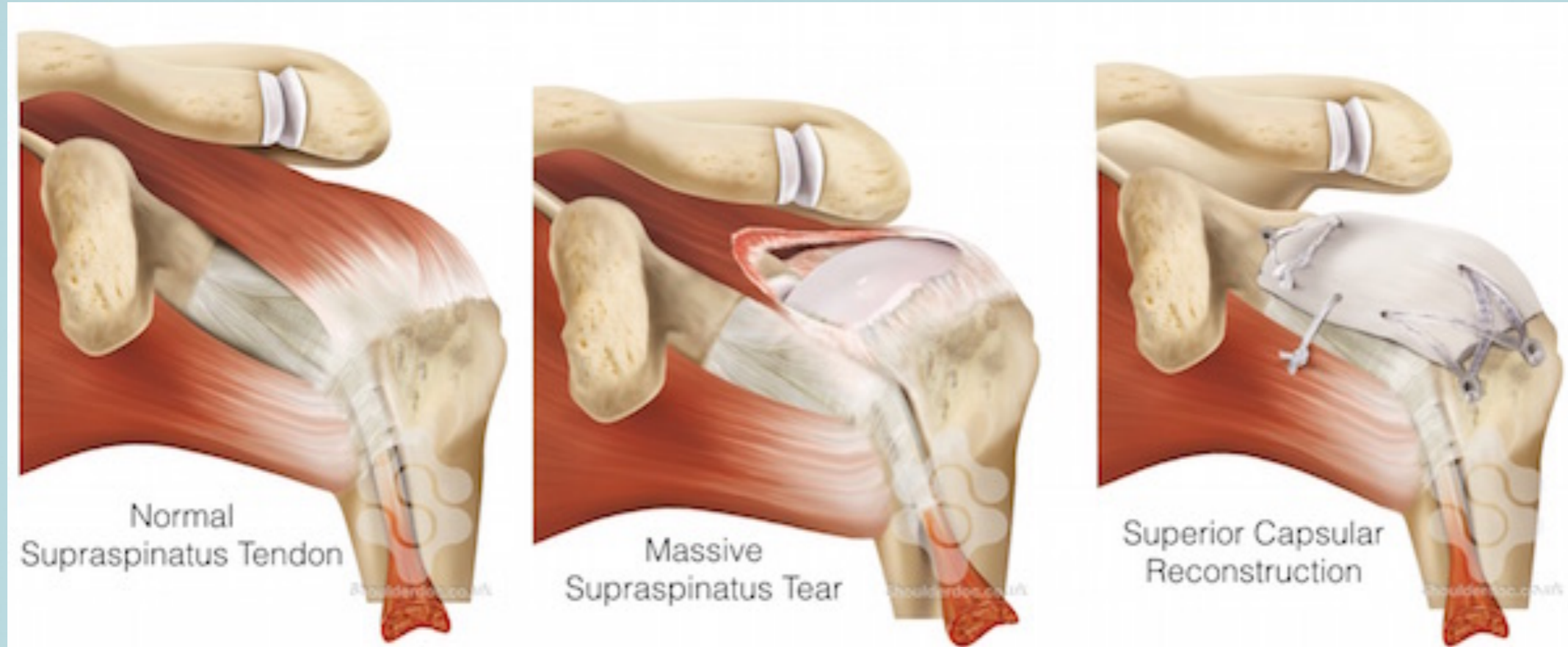
SUPERIOR CAPSULE RECONSTRUCTION

RIGHT CHOICE FOR THE RIGHT PATIENT

T. Scott Maughon, M. D.

Assistant Professor Emory Sports Medicine

INDICATIONS



- Irreparable Rotator cuff tears
- Few degenerative changes
- Hamada class 3 or less
- Younger patients
- Not mentally ready for a
- Reverse TSA



- PRE OPERATIVE ASSESMENT
- XRAYs
- MRI
- CT

Tangent Sign

- Tangent sign as viewed in the sagittal plane from a reference line between the coracoid and scapular spine to assess supraspinatus muscle bulk.

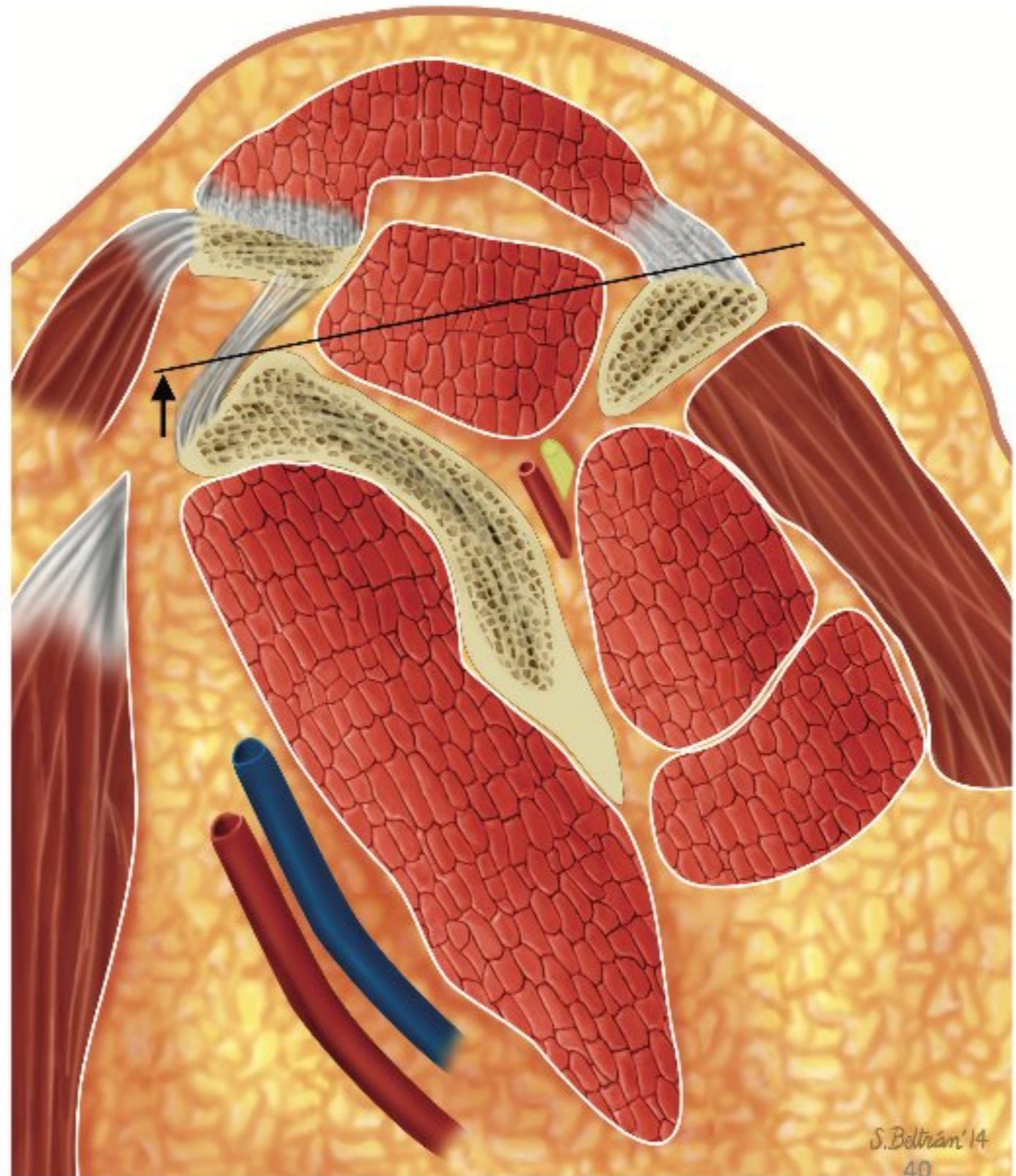
- The supraspinatus muscle is above the tangent line indicating normal muscle bulk.

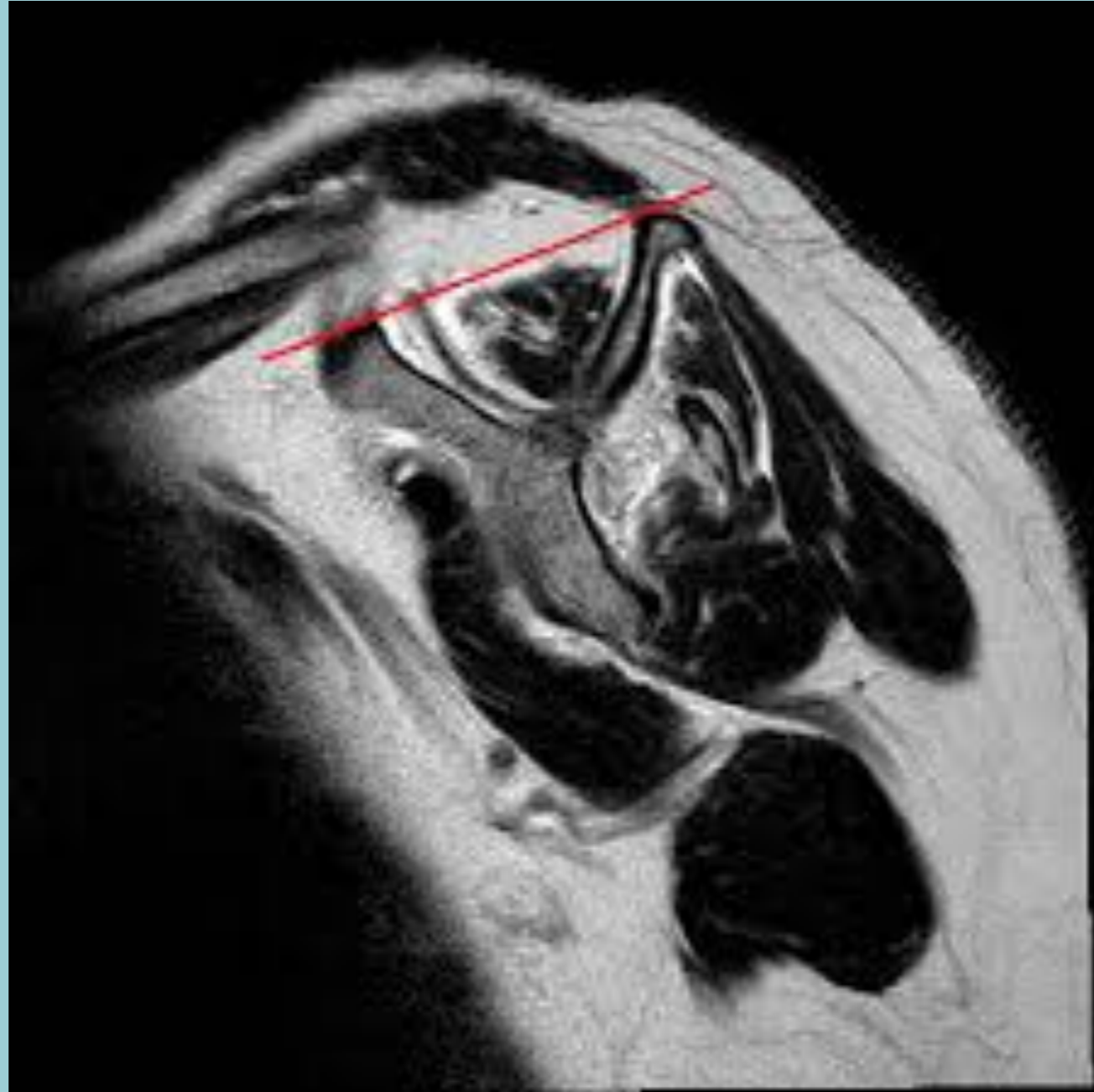
- In the Goutallier atrophy classification, the supraspinatus is classified from stage 0 (normal) to stage 4 (more fat than muscle).

- The classification is used to assess the reparability of large rotator cuff tears.

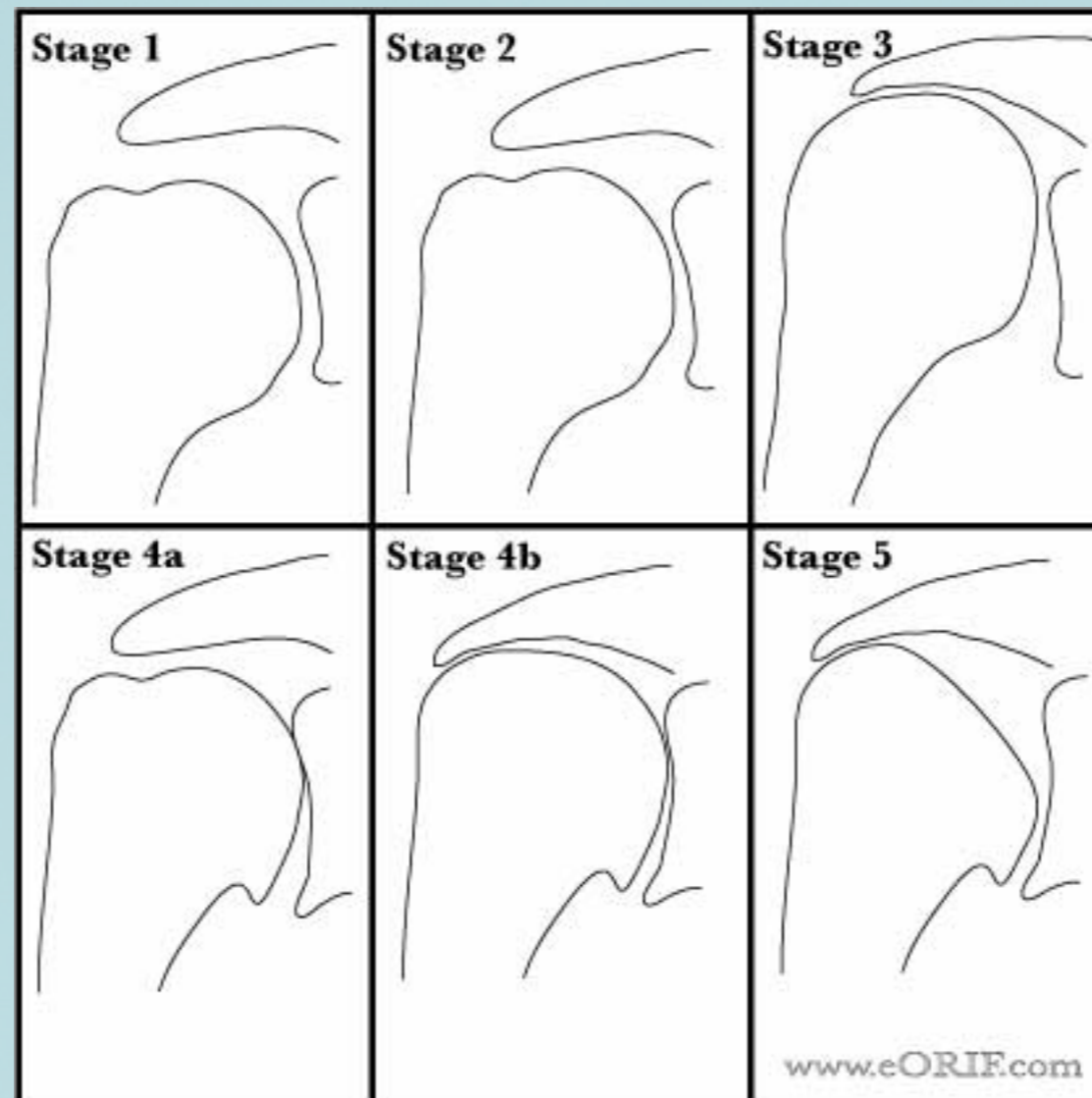
- Stage 0—normal muscle
- Stage 1—some fatty streaks;
- Stage 2—less than 50% fatty muscle atrophy
- Stage 3 = 50% fatty muscle atrophy
- Stage 4—greater than 50% fatty muscle atrophy

- In this illustration, the supraspinatus projects above the line between the coracoid and scapular spine.





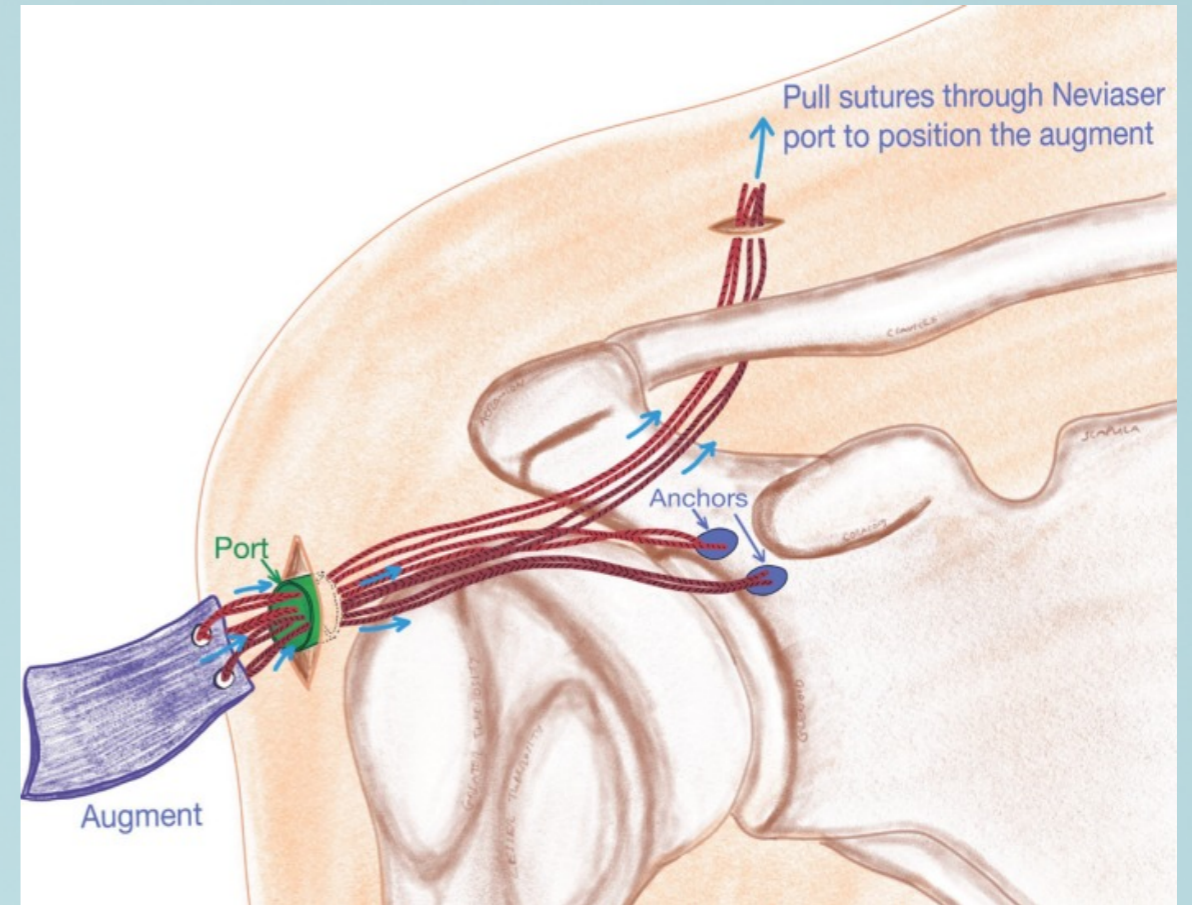
HAMADA CLASSIFICATION



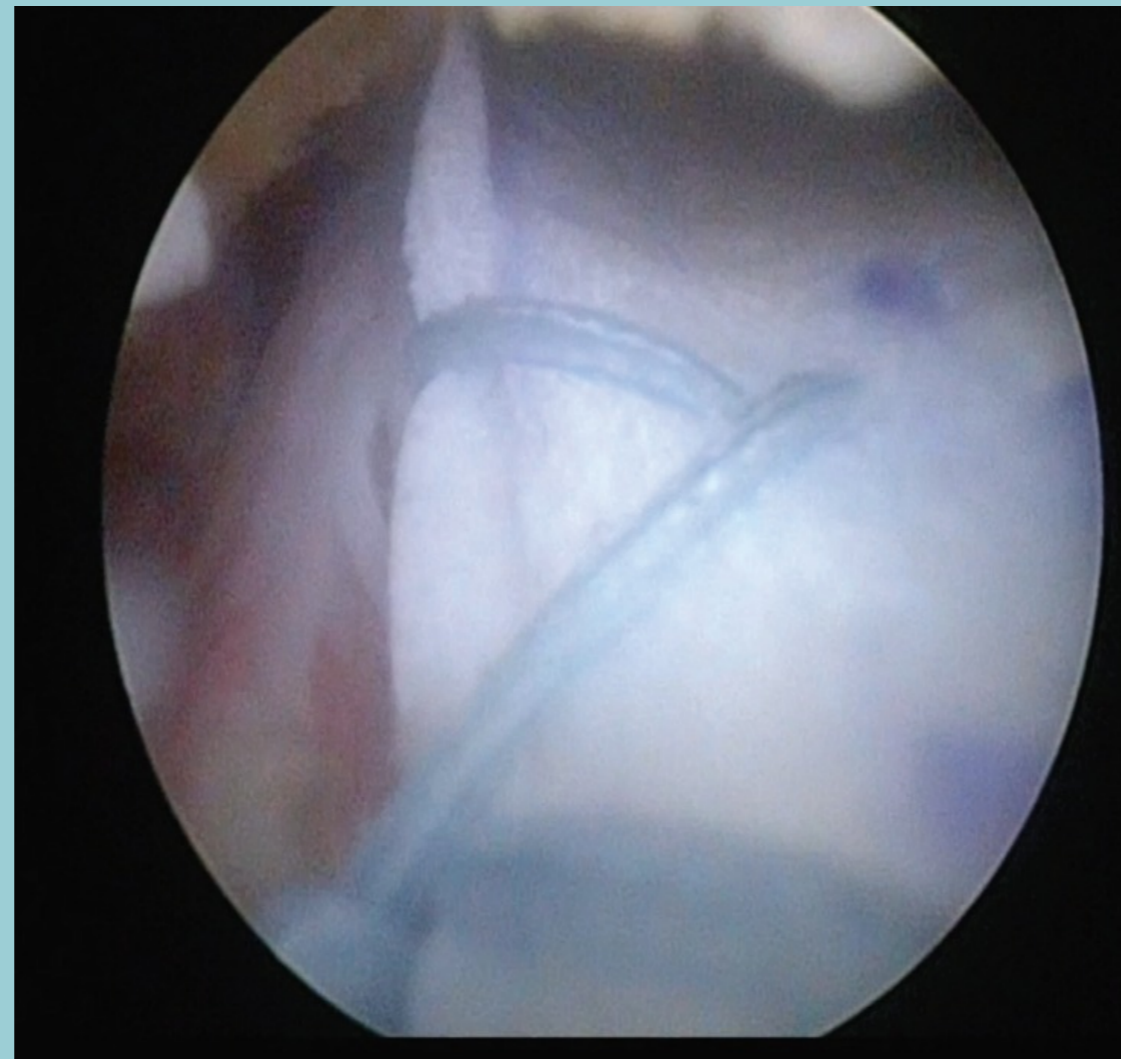
PROS



- Less morbidity
- Reduced operative time
- Not the end of the line
- Can always have reverse if it fails or degenerative changes develop or advance



IF YOU STAY WITHIN THE
GUIDELINES
THE OUTCOMES ARE GOOD



LITERATURE

Altinas, et al American journal of Sports Medicine

3/2020

7 studies

352 patients

Both fascia lata and allografts

13% grafts tore

7 revised to reverse tsa

Satisfaction was from 70-90%

LITERATURE

Mihata
3/2013

20/24 shoulders had no tear at 24 months
Active elevation improved from 84 to 148 deg

THANK YOU

