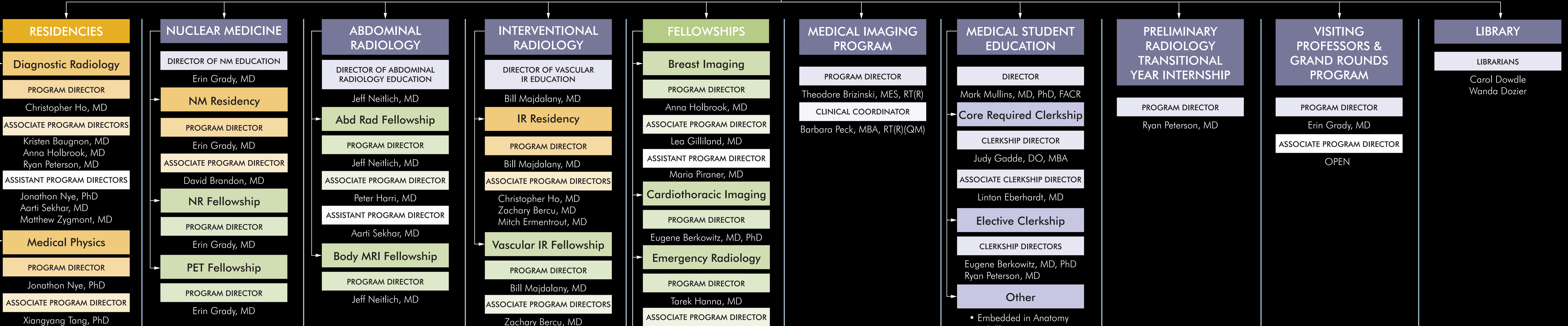


DEPARTMENT CHAIR
 Carolyn Cidis Meltzer, MD, FACR

VICE CHAIR FOR EDUCATION
 Mark Mullins, MD, PhD, FACR



<p>RESIDENCIES</p> <p>Diagnostic Radiology PROGRAM DIRECTOR: Christopher Ho, MD ASSOCIATE PROGRAM DIRECTORS: Kristen Baugnon, MD, Anna Holbrook, MD, Ryan Peterson, MD ASSISTANT PROGRAM DIRECTORS: Jonathon Nye, PhD, Aarti Sekhar, MD, Matthew Zygmunt, MD</p> <p>Medical Physics PROGRAM DIRECTOR: Jonathon Nye, PhD ASSOCIATE PROGRAM DIRECTOR: Xiangyang Tang, PhD</p> <p>64 TRAINEES ACCREDITED SINCE 1972</p> <p>DIAGNOSTIC RADIOLOGY RESIDENCY</p>	<p>NUCLEAR MEDICINE</p> <p>DIRECTOR OF NM EDUCATION: Erin Grady, MD</p> <p>NM Residency PROGRAM DIRECTOR: Erin Grady, MD ASSOCIATE PROGRAM DIRECTOR: David Brandon, MD</p> <p>NR Fellowship PROGRAM DIRECTOR: Erin Grady, MD</p> <p>PET Fellowship PROGRAM DIRECTOR: Erin Grady, MD</p> <p>6 TRAINEES ACCREDITED SINCE 1977</p> <p>NUCLEAR MEDICINE RESIDENCY</p> <p>2 TRAINEES ACCREDITED SINCE 1988</p> <p>NUCLEAR RADIOLOGY FELLOWSHIP</p>	<p>ABDOMINAL RADIOLOGY</p> <p>DIRECTOR OF ABDOMINAL RADIOLOGY EDUCATION: Jeff Neitlich, MD</p> <p>Abd Rad Fellowship PROGRAM DIRECTOR: Jeff Neitlich, MD ASSOCIATE PROGRAM DIRECTOR: Peter Harri, MD ASSISTANT PROGRAM DIRECTOR: Aarti Sekhar, MD</p> <p>Body MRI Fellowship PROGRAM DIRECTOR: Jeff Neitlich, MD</p> <p>6 TRAINEES ACCREDITED SINCE 1999</p> <p>ABDOMINAL RADIOLOGY FELLOWSHIP</p>	<p>INTERVENTIONAL RADIOLOGY</p> <p>DIRECTOR OF VASCULAR IR EDUCATION: Bill Majdalany, MD</p> <p>IR Residency PROGRAM DIRECTOR: Bill Majdalany, MD ASSOCIATE PROGRAM DIRECTORS: Christopher Ho, MD, Zachary Bercu, MD, Mitch Ermentrout, MD</p> <p>Vascular IR Fellowship PROGRAM DIRECTOR: Bill Majdalany, MD ASSOCIATE PROGRAM DIRECTORS: Zachary Bercu, MD, Mitch Ermentrout, MD</p> <p>8 TRAINEES ACCREDITED SINCE 1993</p> <p>VASCULAR IR FELLOWSHIP</p> <p>20 TRAINEES ACCREDITED SINCE 2016</p> <p>INTERVENTIONAL RADIOLOGY RESIDENCY</p>	<p>FELLOWSHIPS</p> <p>Breast Imaging PROGRAM DIRECTOR: Anna Holbrook, MD ASSOCIATE PROGRAM DIRECTOR: Lea Gilliland, MD ASSISTANT PROGRAM DIRECTOR: Maria Piraner, MD</p> <p>Cardiothoracic Imaging PROGRAM DIRECTOR: Eugene Berkowitz, MD, PhD</p> <p>Emergency Radiology PROGRAM DIRECTOR: Tarek Hanna, MD ASSOCIATE PROGRAM DIRECTOR: Mona Vakil, MD</p> <p>Informatics PROGRAM DIRECTOR: Nabile Safdar, MD, MPH</p> <p>Musculoskeletal Imaging PROGRAM DIRECTOR: Adam Singer, MD ASSISTANT PROGRAM DIRECTOR: Walter Carpenter, PhD, MD</p> <p>Neurointerventional PROGRAM DIRECTOR: Michael Cawley, MD, FACS</p> <p>Neuroradiology PROGRAM DIRECTOR: Ashley Aiken, MD ASSISTANT PROGRAM DIRECTOR: Brent Weinberg, MD, PhD</p> <p>Pediatrics PROGRAM DIRECTOR: Paula Dickson, MD</p> <p>AGCME Accredited</p> <ul style="list-style-type: none"> Abdominal Radiology: 6 Trainees Since 1979 Diagnostic Radiology: 2 Trainees Since 1979 Interventional Radiology: 8 Trainees Since 1993 Neuroradiology: 8 Trainees Since 1991 Pediatric Radiology: 3 Trainees Since 1991 Vascular IR: 8 Trainees Since 1993 	<p>MEDICAL IMAGING PROGRAM</p> <p>PROGRAM DIRECTOR: Theodore Brizinski, MES, RT(R) CLINICAL COORDINATOR: Barbara Peck, MBA, RT(R)(QM)</p> <p>36 BMSc STUDENTS 17 RT-BMSc STUDENTS</p> <p>53 TOTAL STUDENTS</p> <p>Since 1946</p>	<p>MEDICAL STUDENT EDUCATION</p> <p>DIRECTOR: Mark Mullins, MD, PhD, FACR</p> <p>Core Required Clerkship CLERKSHIP DIRECTOR: Judy Gadde, DO, MBA ASSOCIATE CLERKSHIP DIRECTOR: Linton Eberhardt, MD</p> <p>Elective Clerkship CLERKSHIP DIRECTORS: Eugene Berkowitz, MD, PhD, Ryan Peterson, MD</p> <p>Other</p> <ul style="list-style-type: none"> Embedded in Anatomy M2 Electives Embedded in Capstone <p>14 GENERAL STUDENTS 4 ADVANCED STUDENTS</p> <p>EMORY UNIVERSITY SCHOOL OF MEDICINE Founded in 1915 140 Students per year ALL Rotate in Radiology</p>	<p>PRELIMINARY RADIOLOGY TRANSITIONAL YEAR INTERNSHIP</p> <p>PROGRAM DIRECTOR: Ryan Peterson, MD</p> <p>7 SLOTS PER YEAR</p> <p>OPERATES UNDER</p> <ul style="list-style-type: none"> EMORY UNIVERSITY SCHOOL OF MEDICINE Department of Internal Medicine EMORY UNIVERSITY SCHOOL OF MEDICINE EMORY UNIVERSITY SCHOOL OF MEDICINE Department of Neurology Department of Anesthesiology <p>AFFILIATIONS</p>	<p>VISITING PROFESSORS & GRAND ROUNDS PROGRAM</p> <p>PROGRAM DIRECTOR: Erin Grady, MD ASSOCIATE PROGRAM DIRECTOR: OPEN</p> <p>32 GRAND ROUNDS PER YEAR</p> <p>19 VISITING PROFESSORS PER YEAR</p> <p>CLEMENTS LECTURE COOPER LECTURE SPRAWLS LECTURE DISTINGUISHED RESEARCH LECTURES (4 PER YEAR) WEENS LECTURE (34TH YEAR)</p>	<p>LIBRARY</p> <p>LIBRARIANS: Carol Dowdle, Wanda Dozier</p> <p>Over 150</p> <p>Books DVDs</p> <p>PERIODICALS JOURNALS</p> <p>FOR MEDICAL STUDENTS, RESIDENTS, AND FACULTY</p> <p>LIAISON BETWEEN</p> <p>RAD LIBRARY HEALTH SCIENCES LIBRARY</p>
---	---	--	--	---	---	---	---	--	--