

Daily Overview (April 15, 2020)

Volumes are holding steady as we continue to prepare for surge conditions related to COVID-19.

Safety:

- We have received units for UV sterilization of N95 masks and are working on protocols for in-department versus hospital-entity level sterilization.
- We continue to work closely with infection prevention and supply chain leadership around optimal protocols and PPE in the MRI environment.

Methods:

- Interventional Radiology scheduling is employing screening procedures for COVID-19, following EHC recommendations for pre-procedural COVID-19 testing, and performing close post-procedural follow up to minimize patients presenting to the ED.
- Expanded imaging workflow specialist (IWS) coverage at EUH (5p- 10pm on weekdays and 8a-8p on weekends) begins today Wednesday, 4/15.

Equipment:

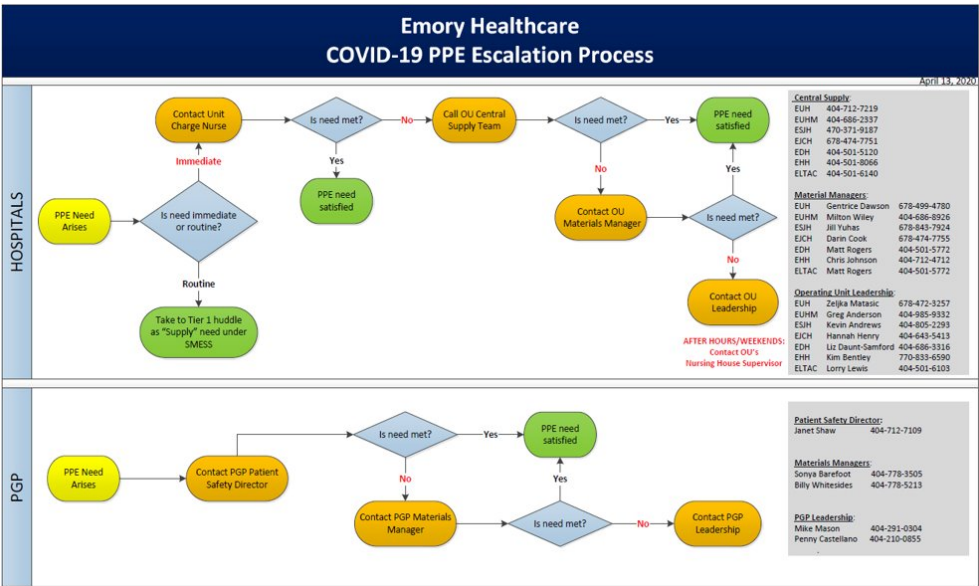
- Grady has approved another portable ultrasound unit for bedside ultrasound-guided procedures.

Supplies:

- Supply levels are holding steady at sufficient levels. Please continue to follow recommendations for distributing and storing PPE, and work with your supervisor if there are PPE needs. The escalation process for PPE needs is in the figure below.

Staffing:

- We have finalized a dashboard of EHC patient and imaging volume metrics to track for anticipated surge conditions, and are incorporating Grady and CHOA metrics.



Your Wellness Committee:

Pausing to reflect and feel appreciative for the things going well in your life is one of the most valuable practices you can do, especially in these challenging times.

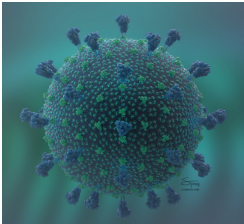
This is a quick gratitude exercise that can be written or completed aloud:

Identify three things that you feel grateful for in your present experience. Be in the here-and-now. Right now, what can you appreciate about your experience? Think about the environment, the time you're taking for your own wellbeing, the air you breathe or the roof over your head- anything that relates to the present.

[Radiology COVID Command Center Web Page](#)

The Department of Radiology and Imaging Sciences is closely monitoring the COVID-19 outbreak; and has developed a website to provide additional information and resources to the department's faculty, trainees, and staff.

Also, you can view all recorded town halls.



Communication is key during this sensitive time. If you or a colleague do not have access to radiologycomm emails or our .edu intranet, please contact the following to receive access:

Radiologycomm Emails- Denise Fennell at dfennel@emory.edu
.edu Intranet- Mohsina Yusuf at mohsinayusuf@emory.edu

