

RESOURCE GUIDE

RESOURCE GUIDE

SECTION 1 - ALS Clinic

SECTION 1 - ALS CLINIC

What to Expect & How to Prepare for Your Next Appointment



NP Visit

Your next visit will likely be with our nurse practitioner, Annie Rowland. Annie received her BSN and MSN from Emory School of Nursing and has been caring for our pALS since 2015. Come prepared with questions and any new concerns that have come up since your diagnosis. Annie can prescribe new medications for symptom management and recommend other interventions based on your individual needs on that day. You will typically see her once every 6 months in between Multidisciplinary clinic visits. Annie sees patients Monday through Friday at the Brain Health Center on the 4th floor. She is also available for semi-urgent consults for patients who feel they need to be seen sooner because of changes in their condition.

Emory Brain Health Center
12 Executive Park Dr., 4th floor
Atlanta, GA 30329

Free parking and valet services available

Multidisciplinary Clinic

Multidisciplinary clinic can be a long day for pALS and caregivers. We are always trying to be more efficient to make your time at the clinic shorter, while also making sure that all your needs are taken care of and we provide the best clinical care.

All patients will see: A neurologist (either the attending physician or nurse practitioner), a respiratory therapist, a member of our research team, a registered nurse, and a representative from MDA and ALSA. Please remember that Emory is a teaching institution so there are frequently medical students, residents, and fellows who will also participate in your care. For some patients, once you see these people, the visit will be complete. Others may need to see additional members of our clinic team based on your needs for the day. This may include a speech therapy, physical and occupational therapy, social work, nutrition, and experts in assistive technology.

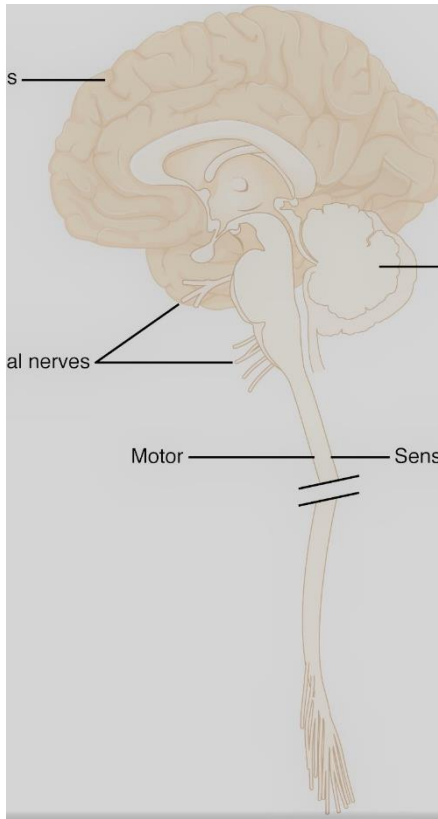
You will be contacted by a member of our team by phone or portal message the week before your appointment. To help us provide the best care please let them know what changes have occurred since your last visit. Planning ahead will help us be prepared to meet your needs, and hopefully shorten the time you will be there. It's a good idea to bring a book or something to pass the time - of course our volunteers are also happy to visit with you as well!

Multidisciplinary ALS clinic

1365 Clifton Rd, Building B, 2nd floor – Suite 2200 in Neurosciences
Atlanta GA 30322

Valet services available at Building B - Self-park in Lowergate West Parking Deck - We are unable to validate parking.

Contact Us: 404-778-3444 Fax: 404-778-3495 Patients can sign up for the patient portal by calling 404-727-8820. This is the best way to communicate for patients with speech problems.



ALS Neurologist

The ALS neurologist is the main physician responsible for and with expertise in the diagnosis, evaluation and management of patients with ALS and other neuromuscular disorders. He or she will prescribe or oversee the use of ALS diagnostic technology, such as electromyography, neuroimaging, and neuropathology. The neurologist can thoroughly explain the disease, the purposes and side effects of all treatments and medications, and progress in ALS research.

Nurse Practitioner

Our Nurse Practitioner works in close collaboration with the neurologists with follow-up patient visits.



ALS Clinic Nurse

Our ALS Clinic Nurse collaborates with our neurologists to direct the efforts of the multidisciplinary team. She serves as a liaison between clinic support teams such as MDA and the ALS Association and coordinates referrals for community and in-home services, as well as, educates patients and families on the ALS diagnosis, progression of disease, and available resources.



Office Staff

Our office staff act as liaisons between patients and the multidisciplinary clinic team. They not only schedule clinic and physician appointments but are a support team for the patients and caregivers, connecting them to resources available and helping to navigate life with ALS.