

# RESOURCE GUIDE

RESOURCE GUIDE

## SECTION 1 - ALS Clinic

SECTION 1 - ALS Clinic

## What to Expect at Your Next Appointment

Your next visit will likely be at our multidisciplinary clinic.

### Multidisciplinary Clinic

Multidisciplinary clinic can be a long day for pALS and caregivers. We are always trying to be more efficient to make your time at the clinic shorter, while also making sure that all your needs are taken care of and we provide the best clinical care.

All patients will see: A neurologist (either the attending physician or nurse practitioner), a respiratory therapist, a member of our research team, a registered nurse, and a representative from MDA and ALSA. Please remember that Emory is a teaching institution so there are frequently medical students, residents, and fellows who will also participate in your care. For some patients, once you see these people, the visit will be complete. Others may need to see additional members of our clinic team based on your needs for the day. This may include speech therapy, physical and occupational therapy, social work, nutrition, and experts in assistive technology.

You will be contacted by a member of our team by phone or portal message the week before your appointment. To help us provide the best care please let them know what changes have occurred since your last visit. Planning ahead will help us be prepared to meet your needs, and hopefully shorten the time you will be there. It's a good idea to bring a book or something to pass the time – **you should expect to be there between 2 to 4 hours.**

### Multidisciplinary ALS clinic

1365 Clifton Rd, Building B, 2nd floor – Suite 2200 in Neurosciences  
Atlanta GA 30322

*Valet services available at Building B*

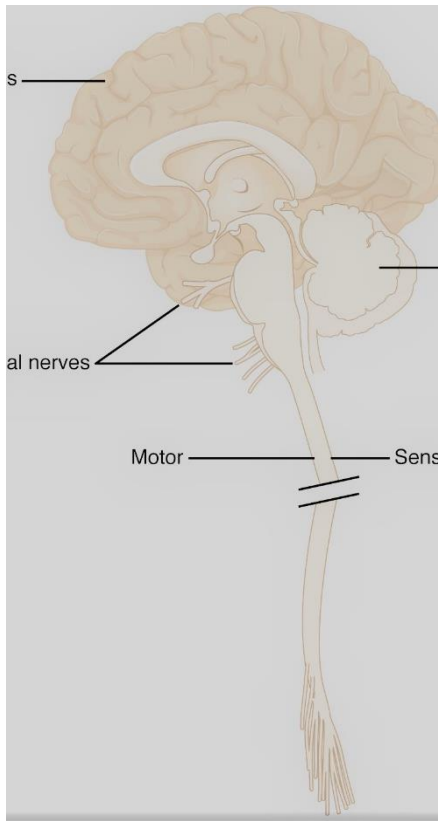
*Self-park in Lowergate West Parking Deck*

*We are unable to validate parking*

**The best way to communicate with us is by using the MyChart messaging system.**

To schedule or cancel an appointment with the ALS Center, call the ALS Patient Care Coordinator, Tamisha Mensah, at 404-727-3507. Our direct fax number is 404-778-3495.

**Make sure to go to the Emory ALS Website ([www.als.emory.edu](http://www.als.emory.edu)) to review the resource guide online!**



## ALS Neurologist

The ALS neurologist is the main physician responsible for and with expertise in the diagnosis, evaluation and management of patients with ALS and other neuromuscular disorders. He or she will prescribe or oversee the use of ALS diagnostic technology, such as electromyography, neuroimaging, and neuropathology. The neurologist can thoroughly explain the disease, the purposes and side effects of all treatments and medications, and progress in ALS research.

## Nurse Practitioner

Our Nurse Practitioner works in close collaboration with the neurologists with follow-up patient visits.



## ALS Clinic Nurse

Our ALS Clinic Nurse collaborates with our neurologists to direct the efforts of the multidisciplinary team. She serves as a liaison between clinic support teams such as MDA and the ALS Association and coordinates referrals for community and in-home services, as well as, educates patients and families on the ALS diagnosis, progression of disease, and available resources.



## Office Staff

Our office staff act as liaisons between patients and the multidisciplinary clinic team. They not only schedule clinic and physician appointments but are a support team for the patients and caregivers, connecting them to resources available and helping to navigate life with ALS.