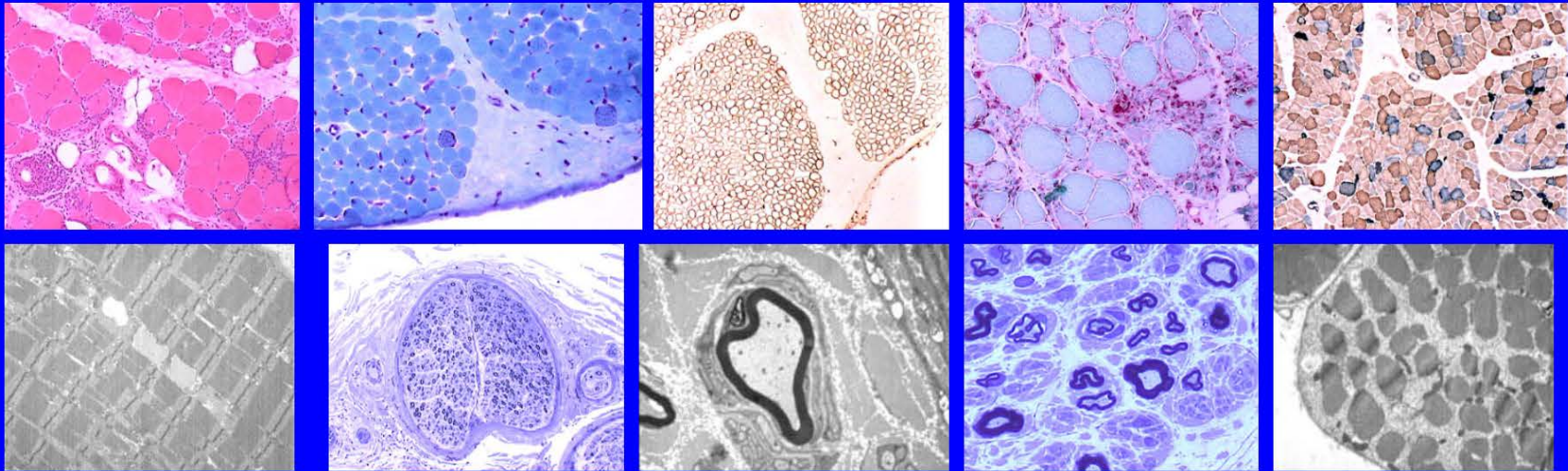


EMORY NEUROMUSCULAR LABORATORY



EMORY NEUROMUSCULAR LABORATORY

- The lab processes all nerve and muscle biopsies sent to Emory University.
- The lab is located within The School of Medicine, Department of Neurology.
- We are a full service laboratory providing tissue diagnostic services for patients with neuromuscular diseases.
- Contact Marilyn Thomas for copies of reports or billing questions at (404) 778-3628.

LABORATORY PERSONNEL

Director: Jonathan D. Glass, MD

Professor of Neurology and Pathology

Board certified in Neurology and Pathology
(Neuropathology)

Raphael James, HT(ASCP)

Marilyn Thomas

LABORATORY HOURS

- 8:30 a.m. to 5:00 p.m., Monday through Friday
- Technicians are able to accept biopsy specimens from 8:30 to 3:00.
- Schedule procedures early to assure they arrive in the lab by 3:00.
- Please avoid Fridays for nerve biopsies due to overnight fixation.
- Contact the lab with technical questions at:
(404) 727-3340 or Pager (404) 686-5500 ID #20007.

PROTOCOL FOR NERVE AND MUSCLE BIOPSIES

The following instructions are provided to ensure proper collection of the biopsy tissue so that subsequent sectioning may be done successfully.

NERVE BIOPSIES

- A segment of nerve approximately 3-5 cm should be obtained.
- If the nerve is to be sent the same day by courier, wrap the nerve in a saline moistened gauze.
- If the nerve is to be sent overnight, carefully lay the nerve on a piece of index card and place in 3% buffered glutaraldehyde.
- Send to the lab on crushed ice.



MUSCLE BIOPSIES



- The muscle specimen should be at least 2cm x 1cm x 1cm.
- Wrap muscle tissue in a saline moistened gauze to prevent tissue from drying out (do not immerse in saline as this causes an artifact when freezing).
- Deliver to our lab same day or overnight on crushed ice.
- See procedure for freezing muscle if tissue cannot be delivered within 24 hours.

PROCEDURE FOR FREEZING MUSCLE (when tissue cannot arrive within 24 hours)



Supplies needed:

- Styrofoam container
- Small metal container for 2-Methylbutane (isopentane)
- OCT compound
- Container of formalin
- Aluminum foil
- Long forceps
- Cork

PREPARATION FOR FREEZING MUSCLE TISSUE



- Fill a container half full of isopentane (about 100ml).
- Surround the container with dry ice.
- Drop tiny pieces of dry ice into liquid and wait until it quits bubbling.
- Write patient name and ID# on a piece of cork and aluminum foil.

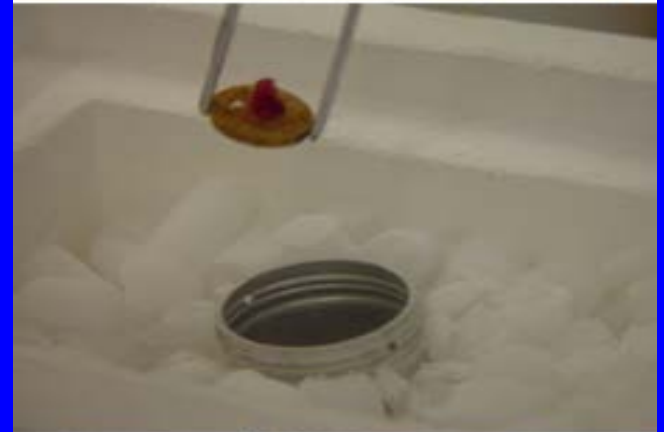
MUSCLE DISSECTION



- Cut muscle tissue and place one third into 10% buffered formalin.
- Place a tiny piece of tissue on an index card and submerge in 3% buffered glutaraldehyde.
- Freeze remaining two thirds piece of muscle tissue.

FREEZING MUSCLE

- Place OCT compound on a piece of cork labeled with patient ID#.
- Orient muscle tissue on cork for cross sectioning.
- Use long handled forceps to hold the cork and completely immerse the tissue into the pre-cooled isopentane.
- Hold the cork steady for 15 to 20 seconds (depending on size of tissue).
- Wrap tissue in pre-cooled foil and ship on dry ice.



PATIENT INFORMATION

EMORY UNIVERSITY SCHOOL OF MEDICINE
Department of Neurology
Neuromuscular Laboratory
101 Woodruff Circle, Room 6310(WMB)
Atlanta, GA 30322

Biopsy Information Sheet

Pt. Name: _____ DOB: _____ Sex: _____
Date of Biopsy: _____ Site of Biopsy: _____ Your ID #: _____
Surgeon: _____ Neurologist: _____
_____ or Referring Physician: _____
Office #: _____ Office #: _____
FAX #: _____ FAX #: _____
Address: _____ Address: _____

Billing Address (Hospital or Dr.'s Office): _____
(We do not bill the patient directly) _____

Authorized Signature/Printed Name: _____
Send Additional Reports to: _____

*****IT IS IMPORTANT TO INCLUDE AS MUCH OF THE FOLLOWING CLINICAL INFORMATION AS POSSIBLE**

Brief Clinical History (attach clinic note if possible):

Diagnostic Considerations: _____

EMG Findings/Date (please attach EMG report if available): _____

CK Levels/Date: _____ Diagnosis Code: _____

Comments: _____

Submitted by: _____ Phone #: _____

EMORY NEUROMUSCULAR LABORATORY
Jonathan D. Glass, M.D. / Director
404-727-3507 office / 404-727-3057 FAX

- Completely fill out biopsy information sheet.
- Attach additional patient clinical history.
- Include EMG report when available.
- Place all in zip lock bag and send with specimen.

PACKAGING FOR FRESH OR FIXED TISSUE



- Place the labeled containers in zip lock bags to prevent water damage of label.
- Place patient biopsy information sheet in separate zip lock bag.
- Place crushed ice in zip lock bag to prevent leakage from styrofoam container.
- Place all in the styrofoam container.

BILLING

- We bill outside facilities directly.
- We cannot bill patients or their insurance companies.
- CPT codes and prices will be supplied upon request.
- Contact Marilyn Thomas for reports and billing questions at (404) 778-3628.

DIRECTIONS FOR COURIER

- Emory Neuromuscular Laboratory
Emory University School of Medicine,
Department of Neurology
Woodruff Memorial Research Bldg., Room 6310
- We are located off Clifton Rd. (Circular drive in front of the building is Woodruff Circle).
- We are beside Emory University Hospital and across the street from the Emory Clinic.
- Laboratory phone #: (404)727-3340
Pager: (404) 686-5500 ID#20007

SHIPPING ADDRESS

Emory Neuromuscular Laboratory
Emory University School of Medicine
Department of Neurology
101 Woodruff Circle, Room 6310
Atlanta, GA 30322