



Ted Johnson, MD, MPH

The Olympics torch is ablaze, the weather's cooking, and so is the buzz from the Emory Division of General Internal Medicine! We've got hot-off-the-press news on awards, Primary Care Consortium honors, clinical accolades, and new leadership roles. Plus, CME, funding, research opportunities, and toasty faculty publications. All the latest updates are a scroll away!

In this issue:

- [Equitable Assessment in Med Ed funding](#)
- [18th Annual Women and Heart Disease Conference](#) (CME)
- [27th Annual Cardiology Update for the Non-Cardiologist](#) (CME)
- [Save the Date! DOM Research Day, Nov. 7, 2024 \(7:30 am - 5 pm\)](#)
- Kudos and Congratulations!
- Research Corner
- Faculty Publications

Scroll down to read more.

NBME Funding for Med Ed Assessment Innovations

NBME has launched a new grant program for early- and mid-career faculty looking to explore ideas that advance medical education and assessment. The 2024 theme for the Emerging Innovators Grant is Promoting **Equitable Assessment in Medical Education**. NBME will fund up to four \$25,000 proposals. **The deadline is August 21, 2024.** Topics may include

- Innovative assessment design with an emphasis on equity and fairness
- Bias investigation and bias mitigation in existing assessments
- Innovative program implementation to advance DEI

[Read more here.](#)

18th Annual Women and Heart Disease Conference August 24

You're invited to join Emory Women's Heart Center for their 18th Annual Emory Women and Heart Disease Conference on Saturday, August 24!

Cardiovascular disease (CVD) remains the leading cause of death among women. Caring for female patients with CVD requires a collaborative, multi-specialty team. Using clinical-based cases, attendees will learn the benefits of comprehensive and coordinated care provided by an expert team of cardiovascular providers.



[Learn more and register.](#)

Target Audience includes General Practice, Internists

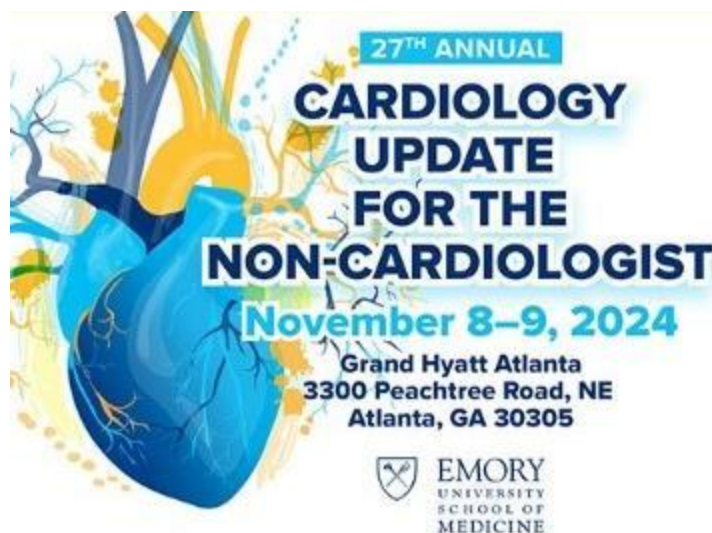
Cost:

- Physician: \$130.00
- Allied Healthcare Professional: \$100.00
- Residents/Fellows/Medical Students: \$50.00

Credits Offered: AMA PRA Category 1 Credit - 4.75

**27th Annual Cardiology Update for the Non-
Cardiologist
Nov. 8-9**

The Cardiology Update for Non-Cardiologists is a comprehensive cardiology course geared towards primary care, family medicine, and internists. We will cover in- and outpatient cardiology topics including heart failure, coronary artery disease, arrhythmias, vascular disease, EKG interpretation, etc.



[Learn more and register.](#)

Target Audience includes Family Practice, General Practice, Internists, Physician Assistants,

- Emory Physician: \$480.00
- Emory Allied Healthcare: \$280.00
- Residents/Fellows/Medical Students: \$200.00

Credits Offered:

- ABIM MOC Points - 13.50
- AMA PRA Category 1 Credit - 13.50



Abstract Submissions Deadline: August 20, 2024

Registration open: August-September

Keynote Speaker: Sandra Wong, MD

[Submit an abstract](#)



Adhyaru named Distinguished Physician



Dr. Bhavin Adhyaru has been named a Distinguished Physician in the Emory School of Medicine Clinical Distinctions Program. The Clinical Distinctions designation program is an annual School of Medicine program designed to recognize faculty who have devoted a majority of their time and careers to providing excellence in clinical care.

Read more about Clinical Distinctions [here](#).

Primary Care Consortium Awards Announced

The Primary Care Consortium announced the awards for the 2023 calendar year and the honorees from the division of General Internal Medicine are listed below. Nominations for the 2024 awards will open in early November. Award categories can be found [here](#).







Turbow awarded Macy Foundation Grant



Dr. Sara Turbow will co-lead a Josiah Macy Jr. Foundation President's funded project to increase collaboration among future health professionals and help support the non-clinical needs of patients. The grant will support Dr. Turbow's "Transforming Interprofessional Education Through Student Hotspotting" project, which addresses the need for more experiential interprofessional education by fostering collaborative, patient-centered care among high-cost, high-need patients and teams of five to seven students from local medical, nursing, pharmacy, physical therapy, public health, and social work programs.

New Position and Funding for Pinto Taylor



Dr. Emily Pinto Taylor has been named the new Associate Program Director for Med-Peds.

Dr. Pinto Taylor has also received EMCF funding for her project titled: "Unequally Distributed Grief: Understanding the Impact of Grief and Loss on the Mental Health Outcomes of Black Individuals."

GIM Liver Clinic Faculty in the News





Congratulations, **Dr. Jennifer Lom**, **Dr. Lesley Miller** and **Dr. Shelly-Ann Fluker**! The AJC [featured](#) the news regarding the Grady Liver Clinic's involvement in developing and testing the new point-of-care HCV test.



The research corner is a space to share research-related opportunities, tips, and more. Please email [Dr. Saria Hassan](#) with suggestions!

GIM-Wide Monthly Research Meeting

Thanks to all who attended our last monthly meeting! Slides and recordings from the sessions can be found on the [GIM Division Intranet](#).

AUGUST GIM Research meeting is cancelled. We will resume on September 19.

Need project funding support?

- Faculty can apply for up to \$1000 for project support

- Funds will be distributed on a rolling basis
- Applications will be reviewed monthly
- To access the application, click [here](#)

Need a Master of Public Health student assistant?

- MPH students can be very helpful on research projects as they bring skills they are learning in their program
- MPH students are allowed to work up to 20 hours a week as long as the work fulfills one of their MPH program competencies
- Students return in August so applications need to go in **NOW** for Fall semester
- **If you are interested in having an MPH student work with you to support a project, please complete the application form [here](#)**

Does my study need IRB review?

Given much of the confusion around this topic after the November meeting, we have worked with the IRB to generate a step-by-step guide to help you answer this question. Please review the PowerPoint [here](#) which hopefully makes things somewhat more clear!

Department of Medicine publishes a weekly newsletter called **What's UP in DOM Research**. Subscribe by clicking [HERE](#).



Recent Collaborative Faculty Publications

Dr. Pamela Vohra-Khullar, Dr. Mary Solis, Dr. Miranda Moore, and Dr. Reema Dbouk published [Impact of an Artificial Intelligence-Based Solution on Clinicians' Clinical Documentation Experience: Initial Findings Using Ambient Listening Technology](#).

Dr. Dylan Baker and Dr. Meredith Lora published [Opt-Out Syphilis Screening at an Urgent Care Center in Atlanta: Evaluation of a Pilot Program](#)

Recent Faculty Publications

Dr. Bhavin Adhyaru
[Finding the Balance: Venous Thromboembolism Prophylaxis during Hematochezia in Crohn's Disease](#)

Dr. Tracey Henry
[Complexities of Physician Workforce Projection: Call for a Unified National Healthcare Workforce Policy](#)

Dr. Antoine Trammell
[Characterization of African-American Super-Agers in the National Alzheimer's Coordinating Center cohort.](#)

[Department of Medicine Calendar](#)



**Division of General
Internal Medicine**

Share

Tweet

Share

Forward

Division of General Internal Medicine
Emory University School of Medicine
Atlanta Georgia 30329

You are receiving this email because you are part of Emory
University Department of Medicine's Division of General Internal
Medicine.

[Preferences](#) | [Unsubscribe](#)