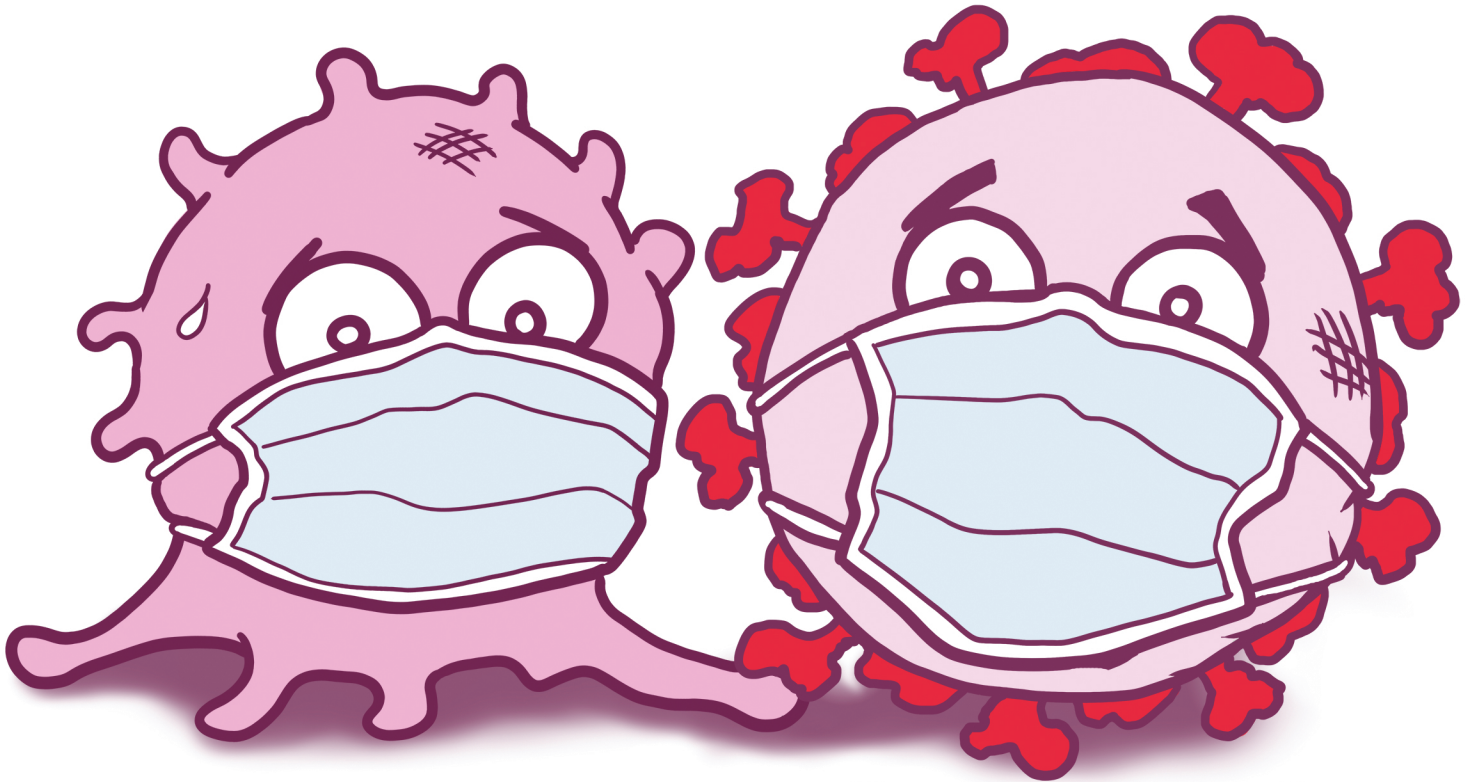


STOP



THE FLU AND COVID TOO!

©2020 Emory University Visual Medical Education

HANDS



Foam or wash your hands!

MASK



Please wear a mask over your **mouth and nose** and stay **at least 6 feet** apart from others.

SICK?



STAY HOME if you have felt ill in last 24 hours (new cough, congestion, runny nose, fever, chills).